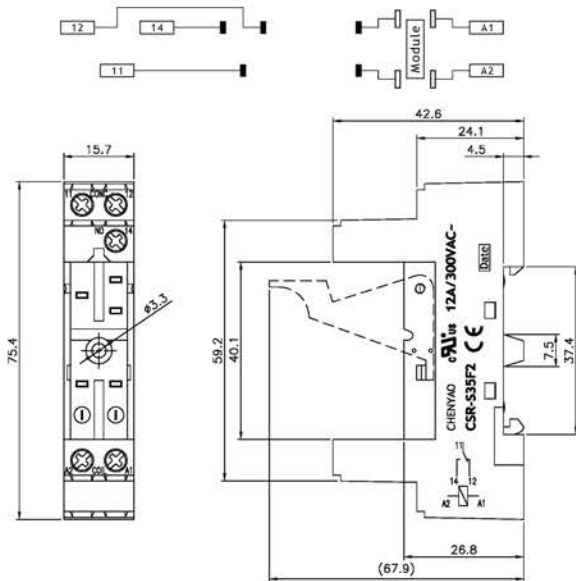


CSR-S35F2

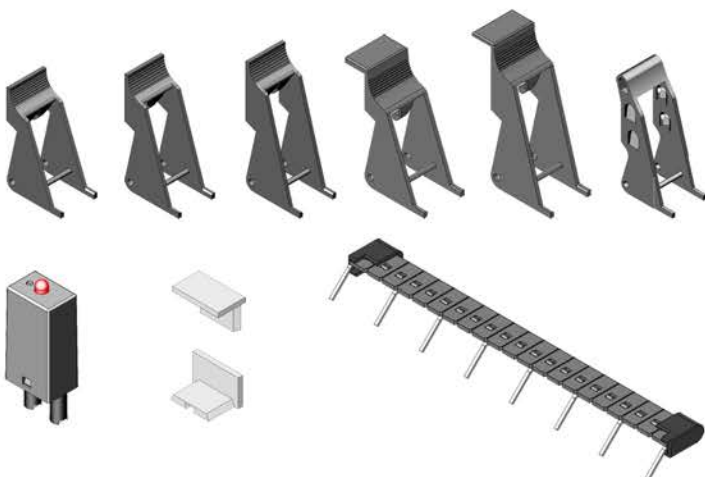


UL/CUL No: E306487

Dimensions



Accessories



Main Feature

- Socket with screw terminal.
- No reduction of protection class or creepage/clearance with plastic retainer.
- Easy replacement of relays.
- Retainer clip with ejection function for relays of 16, 20 or 25mm height.
- Socket can be used as connector for diagnosis function.
- Sockets and accessories: RoHS compliance (Directive 2002/95/EC).
- Socket with screw-type terminal for DIN-rail mounting.

Specifications

Rated current.....12A
 Rated voltage / max. Switching voltage AC.....300VAC
 Dielectric strength coil-contact circuit.....4,000V_{rms}
 Clearance / creepage coil-contact circuit.....≥4/4mm
 Material group of insulation parts.....≥ IIIa

Insulation to IEC 60664-1

Type of insulation coil-contact circuit.....basic
 Open contact circuit.....functional
 Rated insulation voltage.....250V
 Pollution degree.....2
 Rated voltage system.....230/400V
 Over voltage category.....III

RoHS Directive 2002/95/EC

Sockets, retainers and marking tag:.....compliant
 Degree of protection DIN 40050.....IP20
 Ambient temperature range.....-25... +70°C
 Terminals.....screw
 Terminal screw torque acc. IEC 61984.....0.5Nm
 Max.....0.7Nm

Wire cross section

Single wire.....2X2.5mm²
 Fine wire.....2X2.5mm²
 With bootlace crimp (DIN 46228/1).....2X1.5mm²
 Insertion cycles.....A (10)
 Max. Insertion Force total.....100N
 Mounting distance.....0, dense packing
 Weight.....30g
 Packaging unit.....20 pcs.

Order Information

CSR - S 35 F2 - □

Special remark	Nil (for standard) R (for level function different)
Insulation levels	F2 (for two levels) F3 (for three levels)
Terminal pitch	35 (for 3.5mm terminal pitch) 50 (for 5.0mm terminal pitch)
Contact form	P (for PCB terminal) S (for screw type) C (for cage clamp type)
Item	CSR