

Specification for Transducer		Page	3/10
Model No. : KPT-G1340		Revision No.	1.1
		Drawing No.	KP3.840.202R

1. Scope

This product specification is applied to the piezoelectric sounder in alarm systems. Please contact us when using this product for any other applications than described in the above.

本规格书适用于压电式声响器，通常它用在系统中做报警或提示的声响器用，如果将该产品用于其它领域，请与我们联系。

2. General

2.1 Out-Diameter : Ø12.7 mm

外径: Ø12.7 mm

2.2 Height : 6.8 mm

高度: 6.8 mm

2.3 Weight : 1 g

重量: 1克

2.4 Operating Temperature range:

-20~+80°C without loss of function

工作温度: -20~+80°C

2.5 Store Temperature range:

-30~+100°C without loss of function

储藏温度: -30~+100°C

3. Electrical and Acoustic Characteristics.

Test condition : 15 ~ 35 °C, 25% ~ 85% RH, 860~1060 mbar

测试条件: 15~35 °C, 25%~85%RH, 860~1060mbar

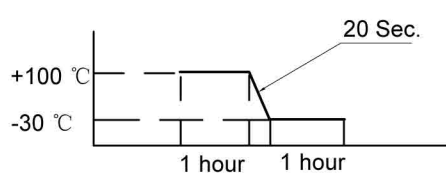
	Items 项目	Specification 规格
1	Rated Voltage 额定电压	12Vp-p Square Wave
2	Max.Allowable Voltage 最大输入电压	3~30Vp-p Square Wave
3	Max.Rated Current 额定电流	4mA at 4.0KHz/12Vp-p Square Wave
4	Resonant Frequency 谐振频率	4.0± 0.5KHz
5	Min.Sound Pressure Level 额定声压	80dB at 4.0KHz/12Vp-p Square Wave/10cm
6	Capacitance at 100Hz 电容量(at 100Hz)	9500pF ± 30%
7	Case Material/Color 壳体材质/颜色	PC/BLACK

Specification for Transducer		Page	4/10
		Revision No.	1.1
Model No. :	KPT-G1340	Drawing No.	KP3.840.202R

4. Reliability Test

After test(1~7item), the transducer S.P.L. difference shall be within $\pm 10\text{dB}$, and the appearance not exist any change to be harmful to normal operation(e.g. cracks,rusts,damages and especially distortion).

在 1-7 项试验后，声响器的声压变化值在 $\pm 10\text{dB}$ 之内，外观无变化（例如：无开裂、生锈、损伤、变形等现象）。

	Item	Specification
1	High Temperature Test 高温试验	<p>After being worked in a chamber with $+100\pm 2\text{ }^\circ\text{C}$ for 2h and then being placed in natural condition for 2h, sounder shall be measured.</p> <p>将产品置于 $+100\pm 2\text{ }^\circ\text{C}$ 试验箱中，先工作 2 小时，然后在正常大气压条件下恢复 2 小时后，进行测量</p>
2	Low Temperature Test 低温试验	<p>First being worked in a chamber with $-30\pm 2\text{ }^\circ\text{C}$ for 2h and then being placed in a chamber with $-30\pm 2\text{ }^\circ\text{C}$ for 16h, finally being placed in natural condition for 2h, sounder shall be measured.</p> <p>将产品置于 $-30\pm 2\text{ }^\circ\text{C}$ 试验箱中，先工作 2 小时，再放置 16 小时，然后在正常大气压条件下恢复 2 小时后，进行测量</p>
3	Humidity Test 潮湿试验	<p>After being placed in a chamber with 90 to 95%R.H. at $+40\pm 2\text{ }^\circ\text{C}$ for 2 h and then being placed in natural condition for 2h , sounder shall be measured.</p> <p>将产品置于湿度为 90-95%R.H，温度为 $+40\pm 2\text{ }^\circ\text{C}$ 试验箱中 2 小时，然后在正常大气压条件下恢复 2 小时后，进行测量</p>
4	Thermal Shock Test 热冲击试验	<p>After being worked in a chamber at $+100\pm 2\text{ }^\circ\text{C}$ for 1 hour, then sounder shall be placed in a chamber at $-30\pm 2\text{ }^\circ\text{C}$ for 1 hour(1 cycle is the below diagram).</p> <p>After 6 above cycles, sounder shall be measured after being placed in natural condition for 1 hour.</p> <p>将产品置于 $+100\pm 2\text{ }^\circ\text{C}$ 试验箱中，先工作 1 小时，然后将产品置于 $-30\pm 2\text{ }^\circ\text{C}$ 试验箱中，再工作 1 小时，经过 6 个循环后，在正常大气压条件下恢复 1 小时，进行测量</p> 

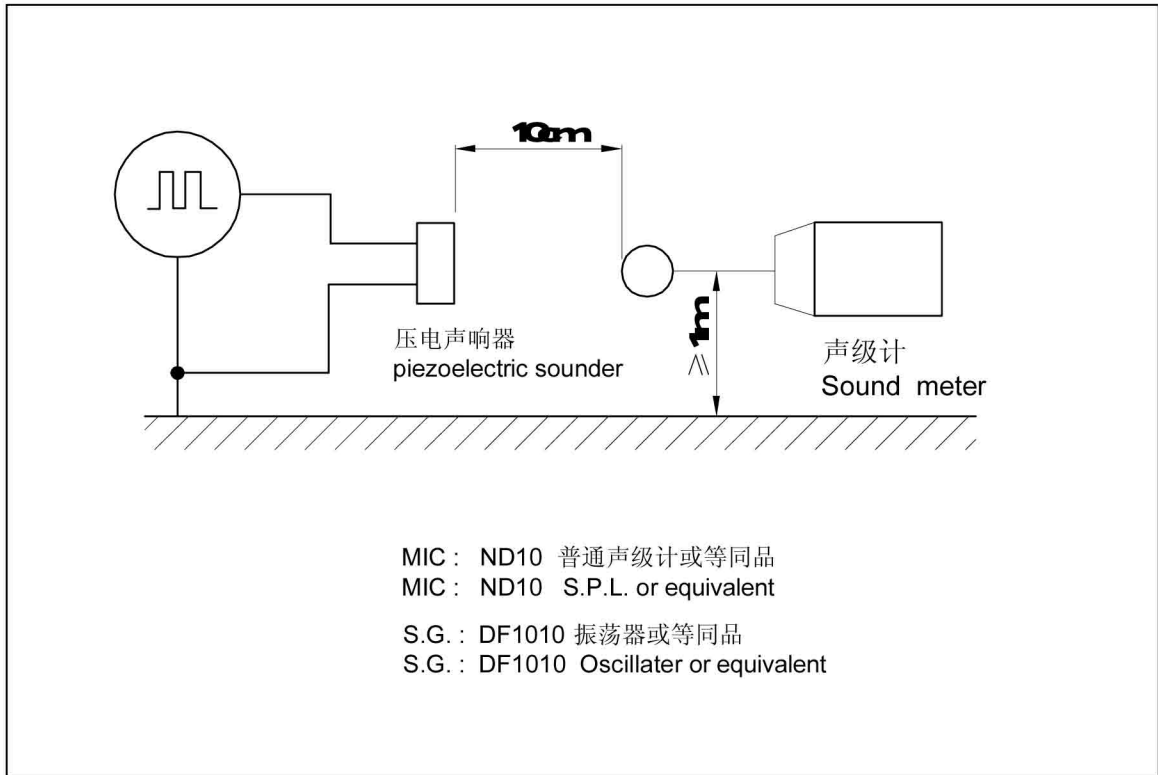
Specification for Transducer		Page	5/10
Model No. : KPT-G1340		Revision No.	1.1
		Drawing No.	KP3.840.202R

4. Reliability Test

	Item	Specification
5	Vibration Resistance 振动试验	<p>Sounder shall be measured after being applied vibration of amplitude of 1.5mm with 10 to 30Hz band of vibration frequency to each of 3 perpendicular directions for 2 hour.</p> <p>振幅为 1.5mm, 频率为 10-30Hz, 三个不同轴方向各振动 2小时, 试验后进行测量.</p>
6	Drop Test 跌落试验	<p>Sounder packed in the carton are dropped in six direction from the height of 80cm to the concrete floor.</p> <p>跌落高度 80cm, 6个不同方向整箱跌落到水泥地, 试验后进行测量.</p>
7	Solderability 可焊性试验	<p>Lead terminals are immersed in rosin for 5 seconds and the immersed in solder bath of $+260 \pm 5^{\circ} \text{C}$ for 3 ± 0.5 seconds.</p> <p>插针浸入松香5秒, 然后再浸入 $+260 \pm 5^{\circ} \text{C}$ 的锡炉中 3 ± 0.5 秒, 插针表面应覆盖一层光滑明亮的焊料.</p>
8	Terminal Strength Pulling 插针强度试验	<p>The force 10 seconds of 9.8N is applied to each terminal in axial direction.</p> <p>插针应承受 9.8N 拉力, 拉力时间 10 秒, 插针无松动和脱落现象.</p>

Specification for Transducer		Page	6/10
Model No. : KPT-G1340	Revision No.		1.1
	Drawing No.		KP3.840.202R

5. Measurement Block Diagram & Response curve



06/30/2005 11:05

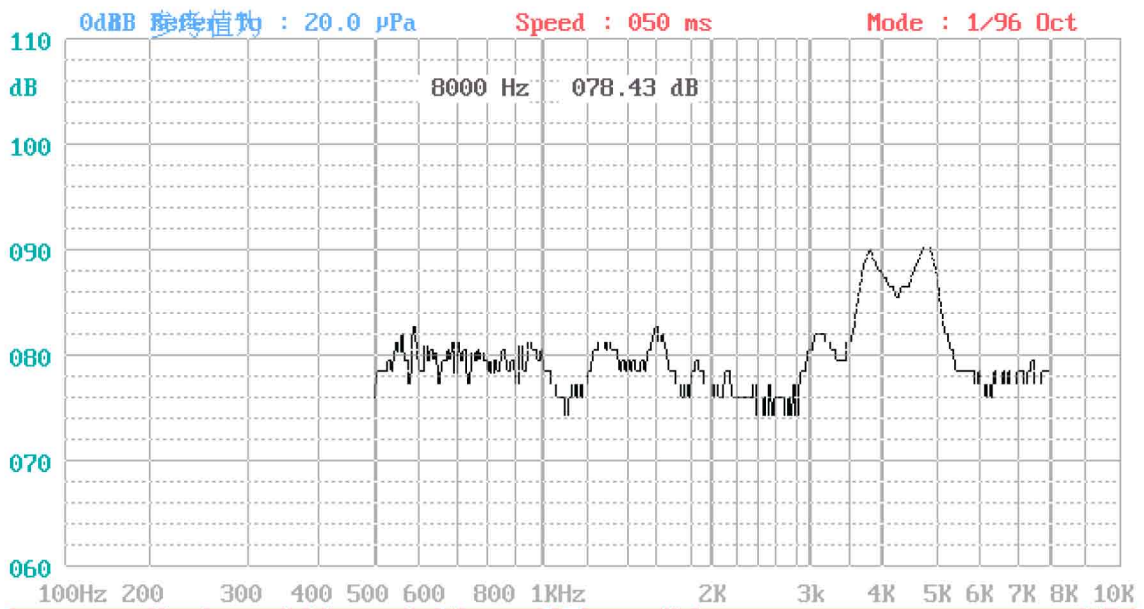
CRY6128AC Electric Sound Tester

Polarity Rect.

Type: T-1340_
 Len.: _____
 Sig.: _____

Fc : 4000 Hz 087.97 dB
 Fo : 4777 Hz 90.47 dB

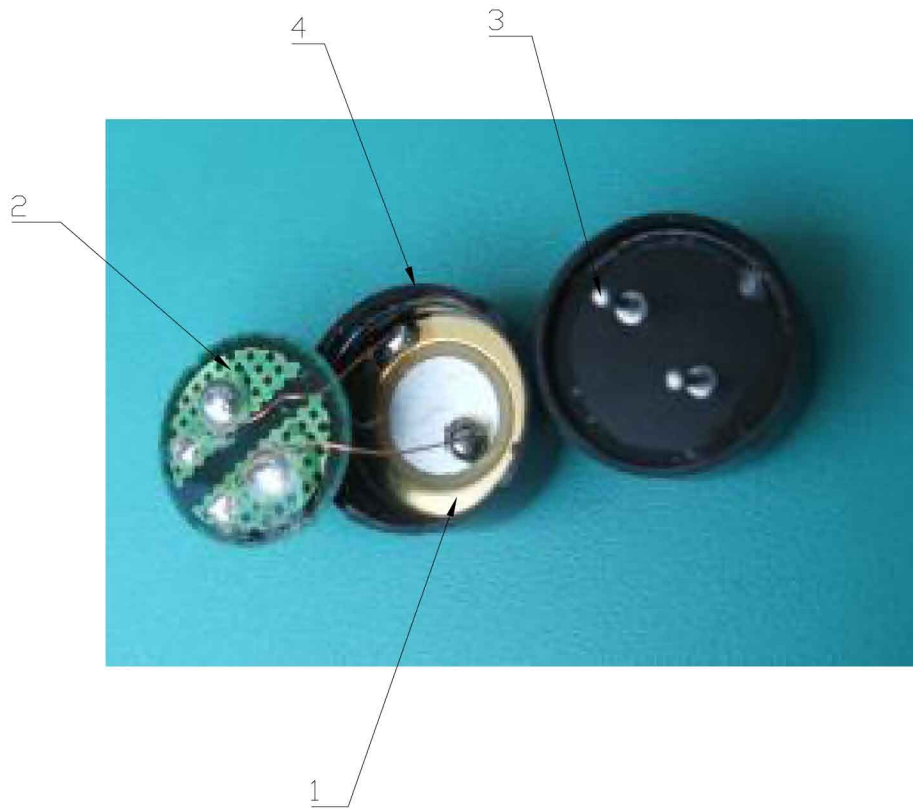
Start Fre.: 500 Hz
 Stop Fre.: 8000 Hz
 Direct



F1:Fc F2:换项 F3:入框 F4:打印 F5:设置 F6:模式 F8:Type F9:C/E F10:保存
 ↑↓:速度 Num Lock:单/扫频 PgUp/PgDn:幅度 Alt+1--2:Save 1--2:Replay ABCD:失真

Specification for Transducer		Page	7/10
Model No. : KPT-G1340		Revision No.	1.1
		Drawing No.	KP3.840.202R

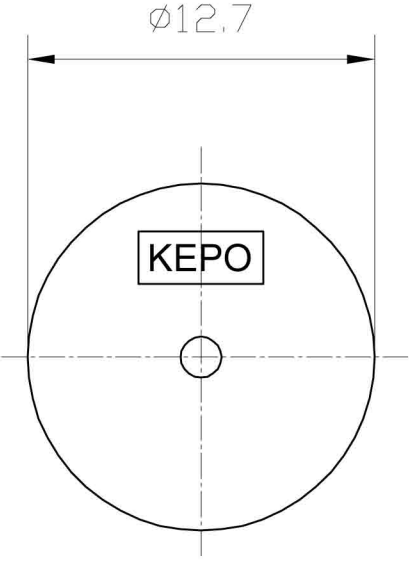
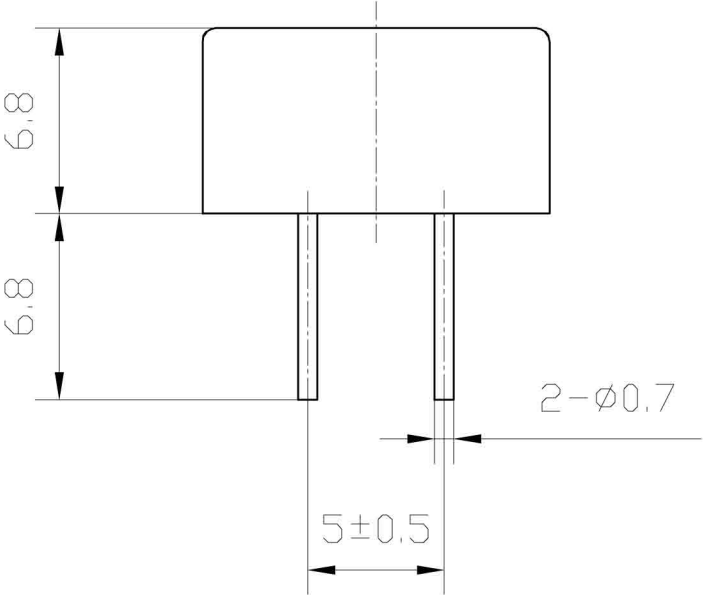
6. Structure



4	Case 壳体	1	PC	SH401151/CHEM(A)	
3	Pin 插针	2	H62	SH401151/CHEM(C)	
2	PCB 印制板	1	FR-4	SH411778-1/CHEM(A)	
1	Piezo-Element 蜂鸣片	1	H68	SH401151/CHEM(B)	
			Piezo Ceramic		
No.	Part Name 型号	Q'TY 数量	Material 材质	SGS Coding SGS备注	Remarks 备注

Specification for Transducer	Page	8/10
	Revision No.	1.1
Model No. : KPT-G1340	Drawing No.	KP3.840.202R

7. Dimensions



FIRST ANGLE PROJECTION

UNIT : mm
Tolerance : ±0.5