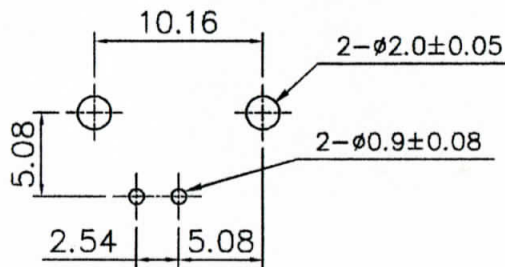
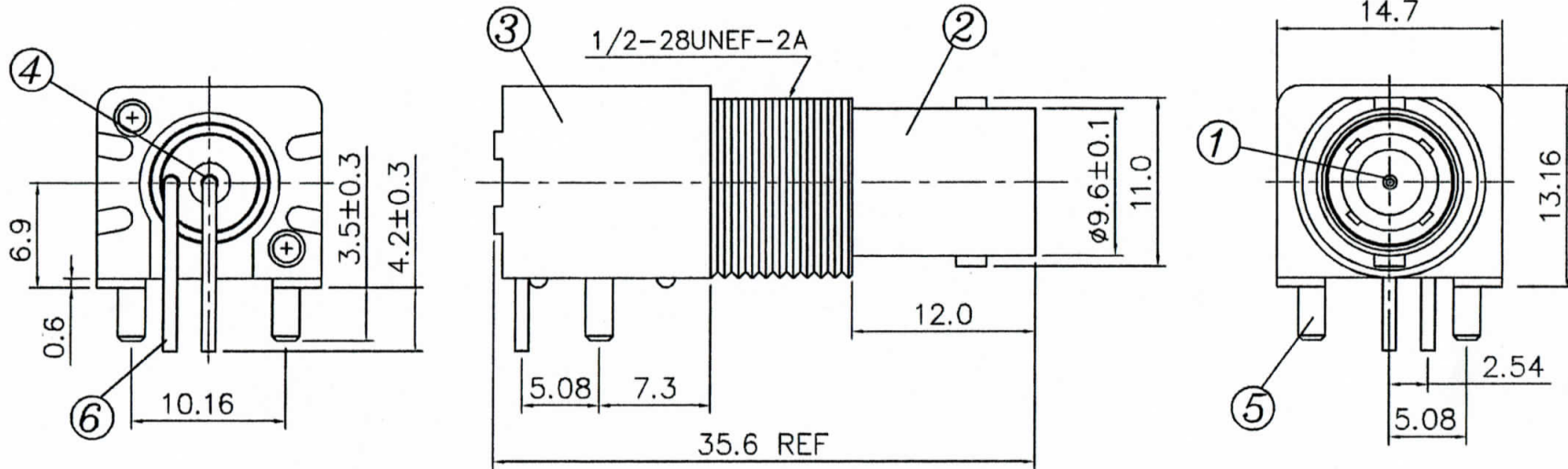
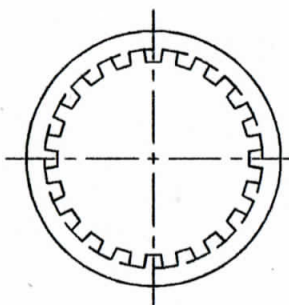


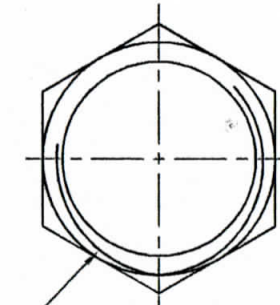
0.5-5 = +/- 0.2
 5-30 = +/- 0.4
 30-120 = +/- 0.6
 120-315 = +/- 1
 315-1000 = +/- 1.6
 1000-2000 = +/- 2.4



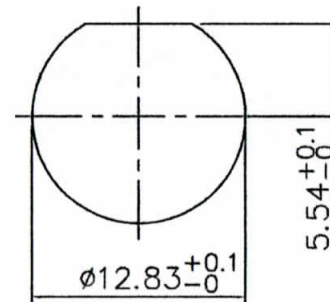
RECOMMENDED PC BOARD LAYOUT
 WITHOUT MOUNTING POSTS



⑦ LOCK WASHER



⑧ CLAMP NUT



RECOMMENDED MOUNTING HOLE
 MAXIMUM PANEL THICKNESS: 5.5MM

8	NUT		BRASS	NICKEL PLATING
7	WASHER		STEEL	NICKEL PLATING
6	SOLDER TALL		COPPER WIRE	TIN PLATING
5	MOUNTING POST		BRASS	TIN PLATING
4	INSULATOR		PE-606	
3	HOUSING		PBT (94 V-0)	WHITE
2	BODY		ZINC ALLOY	NICKEL PLATING
1	CENTER CONTACT		PHOSPHOR BRONZE	GOLD PLATING
NO	DESCRIPTION	Q'TY	MATERIAL	FINISH

RoHS COMPLIANT

APPROVED BY



Date: AUG 04 2015

UNITED AU-VI CO., LTD.

Description:

BNC R/A PCB MOUNT FEMALE WHITE WITH FITTING, 50OHM

Part No.:

V-7044X/UB1

File No.: ABR0158A

