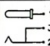
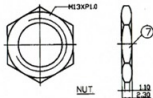
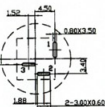
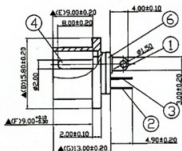
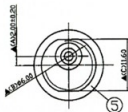


SCHEMATIC	
MODEL NO	C

M13-P1.0 METRIC THREAD



NUT



Pin Hole Layout  
(Jack Bottom View)

7.	Nut	2.3T Brass	1	Nickel Plated
6.	Insulator	1.0T Bakelite	1	Natural
5.	Housing	POM	1	Black
4.	Pin(2.0#)	Copper	1	Nickel Plated
3.	Break Terminal	0.3T Brass	1	Silver Plated
2.	Sleeve Spring	0.2T Phosphor Bronze	1	Silver Plated
1.	Pin Terminal	0.4T Brass	1	Silver Plated
NO.	Description	Material	Q'TY	Finish

Uniteda AU-VI

DATE	DWN	CHKD	APVD	MANAGER
10.14.2011	王展峰	2/22/11		王展峰

PART NAME :DC POWER JACK

PART NUMBER: DC-9303

VERSION:6.0

TOLERANCE :±0.3mm UNLESS OTHERWISE SPECIFIED

UNIT:mm



SCALE:1/1

SPECIFICATIONS:

Contact Resistance : 30mΩ max  
 Current Rating : Max 3.0A , 18VDC  
 Insulation Resistance : 100MΩ min. at DC 500V  
 Dielectric Withstanding Voltage: AC 500V for one minute  
 Remark: ▲ : The Most Important Dimension



RoHS Compliant