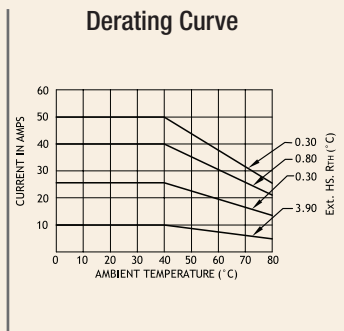
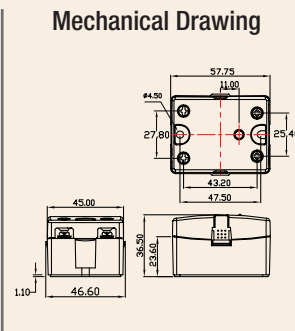
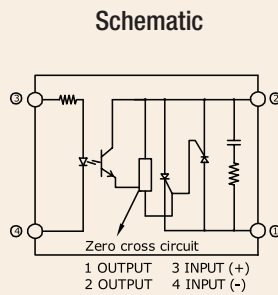


# Series: 001 SJ/K

**Single Phase SSR (480VAC)  
10~50Amps**

INPUT : DC Control  
OUTPUT : Back to Back SCR



## Salient Features

- Opto Isolation 4000 VAC • Zero Voltage Turn On/Random Turn On • TTL/CMOS Compatible (Sink mode)
- Output: NO/NC Configuration • Safety Cover Provision • Built-in Snubber • Panel Mountable/DIN Mountable
- Reverse Voltage Protection for DC/AC • Transient Protection Available (Optional)

| ELECTRICAL SPECIFICATION @ TA = 25°C |        |      | NOTE: FOR RANDOM T-ON SSR, ADD LETTER 'K' IN PLACE OF 'J' |                            |                            |                            |
|--------------------------------------|--------|------|---|----------------------------|----------------------------|----------------------------|
| PARAMETER                            | SYMBOL | UNIT | PRODUCT PART NUMBERS                                      |                            |                            |                            |
|                                      |        |      | <b>001 SJDA<br/>481000</b>                                | <b>001 SJDA<br/>482500</b> | <b>001 SJDA<br/>484000</b> | <b>001 SJDA<br/>485000</b> |

### INPUT

| PARAMETER             | SYMBOL | UNIT  | 001 SJDA<br>481000 | 001 SJDA<br>482500 | 001 SJDA<br>484000 | 001 SJDA<br>485000 |
|-----------------------|--------|-------|--------------------|--------------------|--------------------|--------------------|
| Control Voltage Range |        | Vdc   | 3-32               | 3-32               | 3-32               | 3-32               |
| Control Current Range |        | mA    | 1-25               | 1-25               | 1-25               | 1-25               |
| Pick-up Voltage       |        | Vdc   | 3.0                | 3.0                | 3.0                | 3.0                |
| Drop-out Voltage      |        | Vdc   | 1.0                | 1.0                | 1.0                | 1.0                |
| Input Resistance      |        | KOhms | 1.2                | 1.2                | 1.2                | 1.2                |

### OUTPUT

| PARAMETER                               | SYMBOL           | UNIT             | 001 SJDA<br>481000 | 001 SJDA<br>482500 | 001 SJDA<br>484000 | 001 SJDA<br>485000 |
|---|------------------|------------------|--------------------|--------------------|--------------------|--------------------|
| RMS on state Current                    | IT               | A                | 10                 | 25                 | 40                 | 50                 |
| Mains Control Voltage                   | Vrms             | Vac              | 48-480             | 48-480             | 48-480             | 48-480             |
| Rep Peak Off state Voltage              | Vdrm             | Vpk              | 800                | 800                | 800                | 800                |
| Peak one cycle surge Current (Non Rep)  | ITSM             | A                | 83                 | 300                | 800                | 520                |
| On state Voltage Drop                   | VTM              | Vac              | 1.6                | 1.6                | 1.6                | 1.6                |
| Off state Leakage current               | ldrm             | mA               | 5                  | 5                  | 5                  | 5                  |
| Zero T-On Voltage                       |                  | Vpk              | 25                 | 25                 | 25                 | 25                 |
| Critical Rate of Rise Off state Voltage | dv/dt            | V/μs             | 200                | 300                | 500                | 1000               |
| Holding Current                         | IH               | mA               | 30                 | 50                 | 80                 | 150                |
| Fusing Current                          | I <sup>2</sup> T | A <sup>2</sup> s | 41                 | 510                | 3745               | 1350               |
| Thermal Resistance                      | RTH              | °C/W             | 3.0                | 2.35               | 0.86               | 1.0                |
| Turn-On [Zero/Random]                   | T-On             | ms               | 10/0.1             | 10/0.1             | 10/0.1             | 10/0.1             |
| Turn-Off [Zero/Random]                  | T-Off            | ms               | 10                 | 10                 | 10                 | 10                 |
| Frequency Range                         | f                | Hz               | 47~63              | 47~63              | 47~63              | 47~63              |
| Operating Temp                          | T Oper           | °C               | -30 to +80         | -30 to +80         | -30 to +80         | -30 to +80         |

