

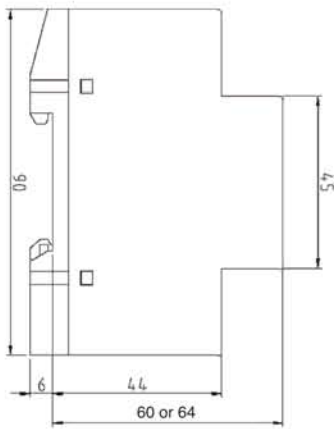
Hour counters for DIN rail mounting, for AC or DC, overall height 60 mm or 64 mm

With its overall height of 60 or 64 mm it is an ideal counter program for DIN rail mounting. A part of these AC or DC counters are produced with two decimals and special terminals (lift principle) values in just one single housing.

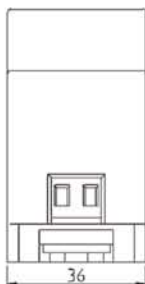
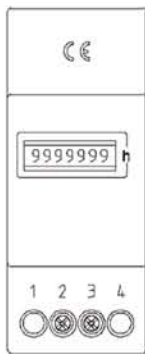


type 661.6

| AC | DC | counting range | overall height in mm | | »Lift«-terminal connection |
|-------|-------|----------------|----------------------|----|----------------------------|
| | | | 60 | 64 | |
| 661.6 | 666.6 | 99999,99 h | ■ | | ■ |



drawing



Find pulse counter as single counter for DIN rail mounting on page 41.

Technical specifications:

| | AC |
|---------------------------------------|---|
| housing: | plastic light grey RAL 7035 |
| gearing: | plastic |
| counting range: | 99999,99 |
| digits: | 1,8 x 3,6 mm, white on black, Decimals black on white |
| voltages: | 115 or 230 V AC |
| special voltages: (additional charge) | 12, 24, 48, 400 V AC |
| voltage tolerance: | ±10 % |
| frequency: | 50 or 60 Hz (on request 20 to 100 Hz) |
| power consump.: | < 2 VA |
| protection (front): | IP 65, screws IP 20 |
| ambient temp.: | -10 °C to +70 °C |
| stocking temp.: | -40 °C to +80 °C |
| elec. connection: | Terminal Blocks (lift principle) with Philips-Head-Screw (+/- screw) in combination with slotted screw with 3 mm screwdriver size, 0-2.5 mm ² fine wire or 0-4 mm ² single wire clamp 2 and 3 (1 and 4 n. c.) |
| max. torque: | 0,5 Nm |
| vibration resist.: | 1 g (10...500 Hz) acc. to EN 60068-2-34 |
| shock resistance: | 30 g (18 ms) acc. to EN 60068-2-27 25 g (6 ms) acc. to EN 60068-2-29 |
| EMC: | EN 55011, EN 61000-6-2 |
| industrial norm: | EN 61010, protection class II |
| reset: | without |
| weight: | approx. 75 g |
| approval: | CE, UL, cUL |
| fixing: | snap-on fixing for DIN-rail according to DIN EN 50022 |