

# DC Disconnect Switch

DX Series



**Bremas Erscè S.p.A.**  
Via Castellazzo 9 – 20040 Cambiago (MI)  
Tel +39 02 95651611 Fax +39 02 95651639  
www.bremas.it info@bremas.it  
ISO 9001 Certified Quality System

## DX150301EPADRND



### Technical data according to IEC 60947-3:2015/A2 AnnexD

Utilization category			PV1 (DC-21B)	PV2
Rated operational voltage	Ue	V dc	1500	1500
Rated operational current	Ie	A dc	30	12
Rated operational voltage (second rating)	Ue	V dc	1000	1500
Rated operational current (second rating)	Ie	A dc	60	25
Rated operational voltage (third rating)	Ue	V dc	-	-
Rated operational current (third rating)	Ie	A dc	-	-
Rated operational voltage (fourth rating)	Ue	V dc	-	-
Rated operational current (fourth rating)	Ie	A dc	-	-
Rated operational voltage (fifth rating)	Ue	V dc	-	-
Rated operational current (fifth rating)	Ie	A dc	-	-
Rated operational voltage (sixth rating)	Ue	V dc	-	-
Rated operational current (sixth rating)	Ie	A dc	-	-
Rated thermal current	Ith	A	60	
DC Poles		Nr.	2	
Rated conditional short-circuit current		kA	5	
Rated insulation voltage	Ui	V dc	1500	
Rated impulse withstand voltage	Uimp	kV	8	
Rated short-time withstand current (1 s)	Icw	A	780	
Rated short-circuit making capacity	Icm	kA	1,4	
Power loss per layer at 20 A / 50 A		W	0,2 / 1,25	
Max fuse size for short-circuit protection	gPV	A	63	

### Mechanical characteristics

Type of mounting			Base mounting. Back-side for DIN rail or 2 screws fixing, for standard distribution boards (45 mm window). With pre-mounted knob
Layers		Nr.	3
Screwdriver orientation for terminals			Head up
External metal parts (screws, shaft)			Stainless steel
Cross-section of flexible/solid wires	Max	mm <sup>2</sup> AWG	2x 6 2x 10
Cross-section of wires with fork lug	Max	mm <sup>2</sup> AWG	1x 16 1x 6
Screws thread dimensions			M4
Terminal screws tightening torque		Nm	1,7 ±10%
Actuator operation force		Nm	1,5
Net weight		g	145

### Protection degree IEC 529 EN 60529

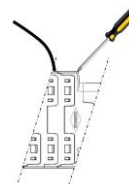
To the terminal			IP20
With product mounted on panel			---

### Ambient conditions

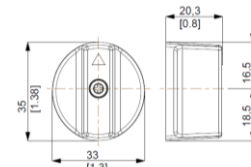
Pollution degree ins.			2
Operational ambient temperature		°C	-40 ÷ +85
Storage ambient temperature		°C	-40 ÷ +85
Damp heat test IEC60068-2-30			90-100% RH at +55 °C



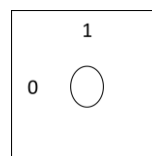
Screwdriver orientation  
for terminals



Knob



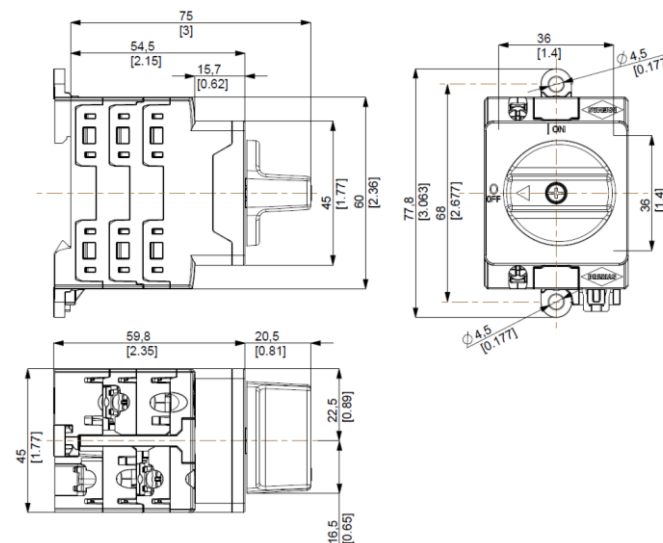
Positions



Electrical Diagram

Layer	1	2	3	4	5	6	7	8	9	10	11	12	13	14	15	16
Marking	-1	+1														
Marking	-1	+1														
0/OFF																
I/ON	X	X														

Dimensions



Drilling Templates

