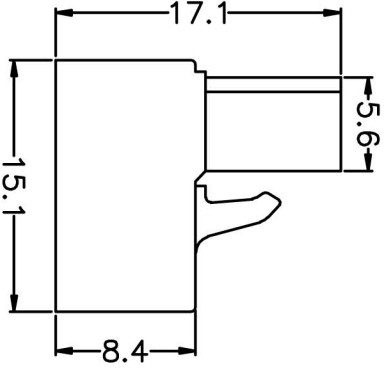
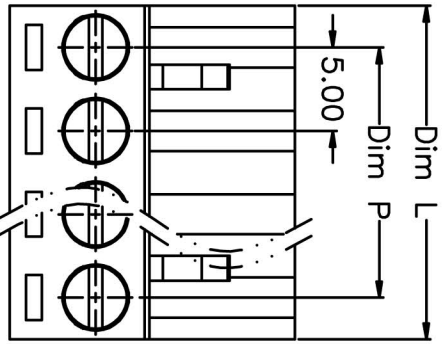
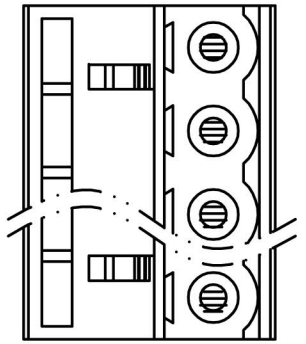
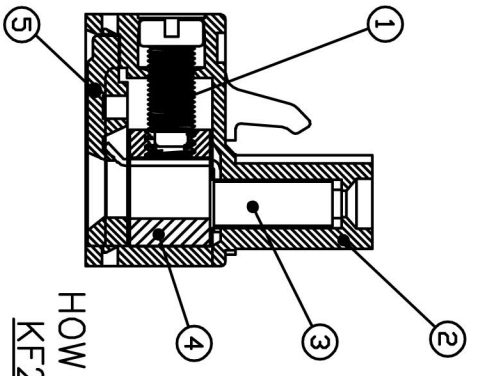
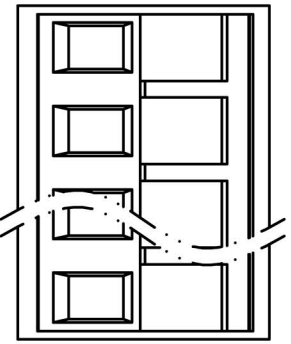


REV.	DESCRIPTION	DATE	DRAWN	APPROVED
A1	DMG.REL	2016/10/7	FANG	YANG



N=Number of Poles
Dim P=(N-1)X5.08
Dim L=Nx5.08

Poles	Dim P	Dim L
2-6P	±0.10	±0.15
7-12P	±0.20	±0.20
13-18P	±0.25	±0.30
19-24P	±0.30	±0.40



- Material
 - ①Screws : M3.0 steel, Zinc plated, "-"-slot type
 - ②Housing : PA66, UL94V-0
 - ③Contact : Phosphor bronze, Ni plated
 - ④Clamp : Brass, Ni plated
 - ⑤Cover : PA66, UL94V-0

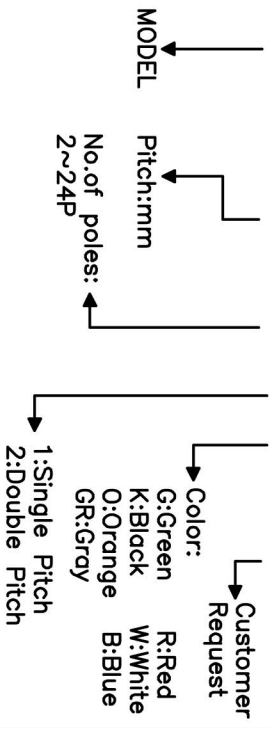
- Electrical

UL	IEC
Rated voltage : 300V	320V
Rated current : 15A	20A
Insulation resistance: 500MΩ/DC500V	
Withstanding Voltage : AC2000V/1min	
Wire range: 28-12AWG	2.5mm ²

- Mechanical
 - Operating temperature: -40°C ~ +105°C
 - Soldering temperature: 250°C ±5 / 5sec
 - Torque: 0.5N.m (4.43lb.in)
 - Strip length: 7-8mm

HOW TO ORDER

KF2EDG-X-5.08-XXP-1 X-XXXXX



GENERAL TOLERANCE	ANGLE TOLERANCE	TOLERANCE
X	±0.5	X'
X	±0.3	X'
.XX	±0.1	.XX'

DRAWING TYPE	CUSTOMER
SCALE	1:1
DRAWING NO.	XP0012016-xxxx

PROJECTION	TITLE
UNITS: mm	KF2EDG-X-5.08-XXP
SHEET SIZE: A4	SERIES: KF2EDG-X