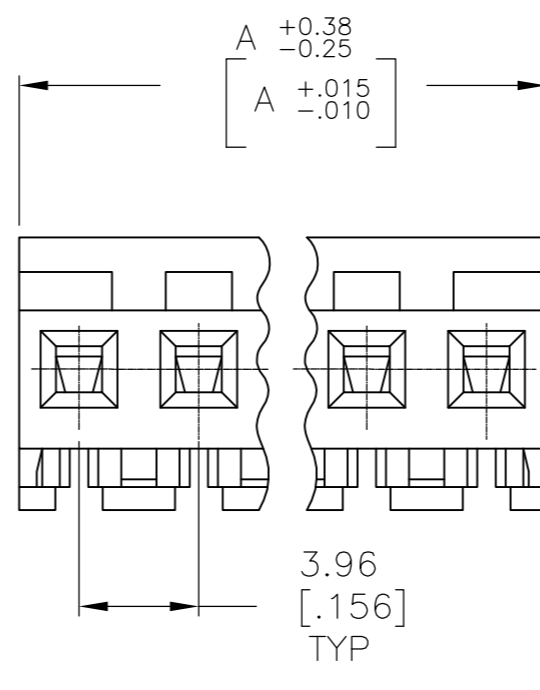
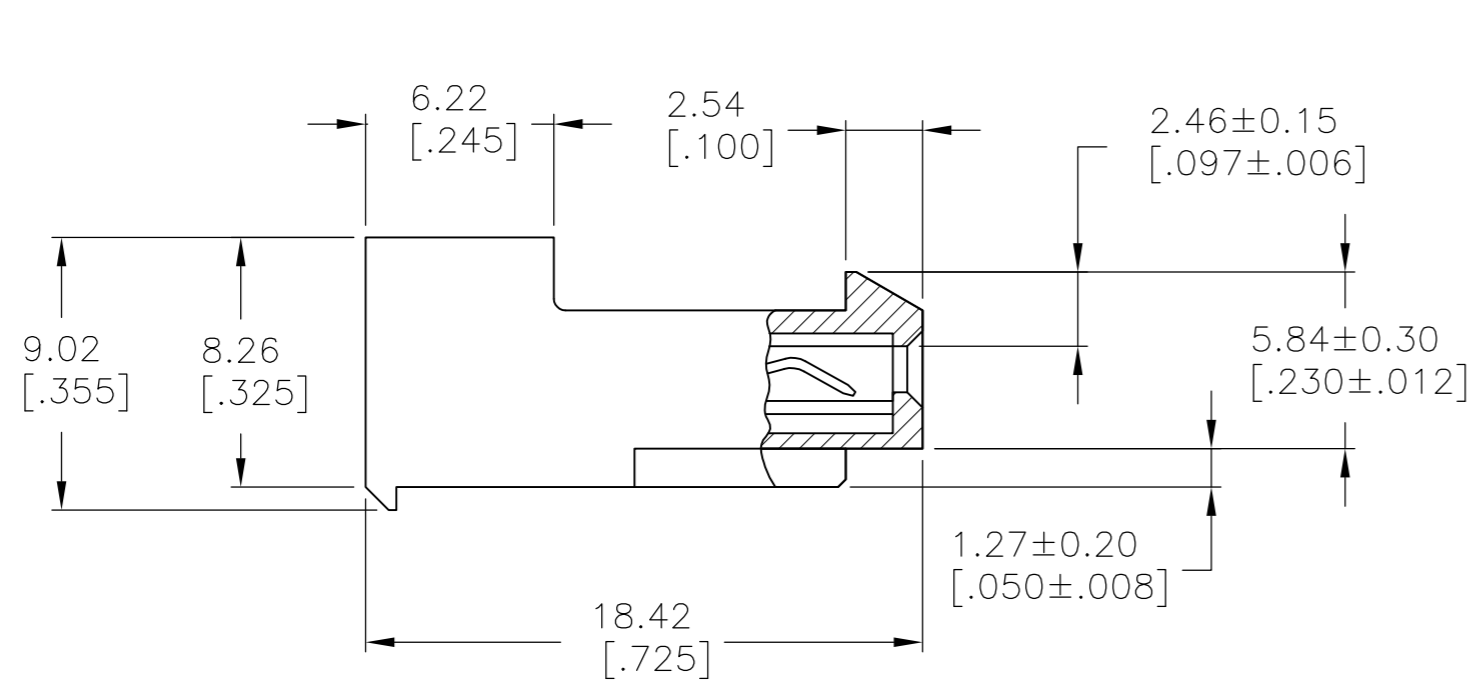
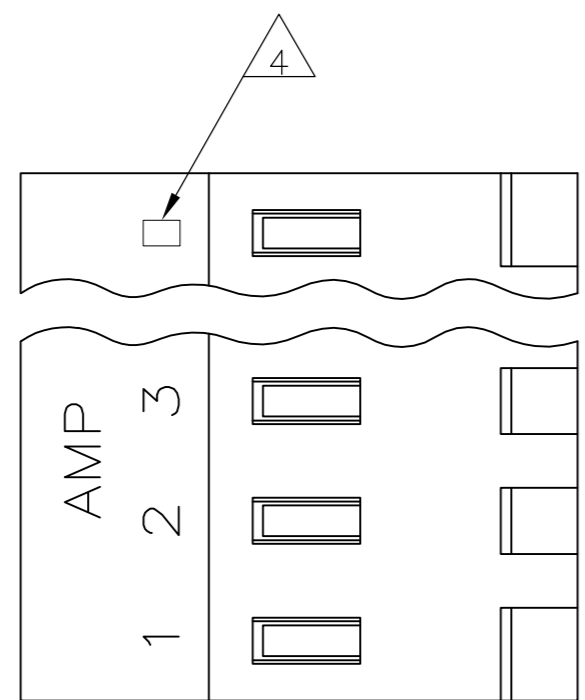


THIS DRAWING IS UNPUBLISHED. RELEASED FOR PUBLICATION
 © COPYRIGHT - By - ALL RIGHTS RESERVED.

LOC		DIST		REVISIONS			
P	LTR	DESCRIPTION		DATE	DWN	APVD	
	T3	REVISED PER ECO-11-004587		11MAR11	RK	HMR	



95.10[3.744]	24	5-640429-4
91.13[3.588]	23	5-640429-3
87.17[3.432]	22	5-640429-2
83.21[3.276]	21	5-640429-1
79.25[3.120]	20	5-640429-0
75.29[2.964]	19	4-640429-9
71.32[2.808]	18	4-640429-8
67.36[2.652]	17	4-640429-7
63.40[2.496]	16	4-640429-6
59.44[2.340]	15	4-640429-5
55.47[2.184]	14	4-640429-4
51.51[2.028]	13	4-640429-3
47.55[1.872]	12	4-640429-2
43.59[1.716]	11	4-640429-1
39.62[1.560]	10	4-640429-0
35.66[1.404]	9	3-640429-9
31.70[1.248]	8	3-640429-8
27.74[1.092]	7	3-640429-7
23.77[.936]	6	3-640429-6
19.81[.780]	5	3-640429-5
15.85[.624]	4	3-640429-4
11.89[.468]	3	3-640429-3
7.92[.312]	2	3-640429-2
95.10[3.744]	24	2-640429-4
91.13[3.588]	23	2-640429-3
87.17[3.432]	22	2-640429-2
83.21[3.276]	21	2-640429-1
79.25[3.120]	20	2-640429-0
75.29[2.964]	19	1-640429-9
71.32[2.808]	18	1-640429-8
67.36[2.652]	17	1-640429-7
63.40[2.496]	16	1-640429-6
59.44[2.340]	15	1-640429-5
55.47[2.184]	14	1-640429-4
51.51[2.028]	13	1-640429-3
47.55[1.872]	12	1-640429-2
43.59[1.716]	11	1-640429-1
39.62[1.560]	10	1-640429-0
35.66[1.404]	9	640429-9
31.70[1.248]	8	640429-8
27.74[1.092]	7	640429-7
23.77[.936]	6	640429-6
19.81[.780]	5	640429-5
15.85[.624]	4	640429-4
11.89[.468]	3	640429-3
7.92[.312]	2	640429-2
DIM A	NO. OF CIRCUITS	PART NO.

- 1 MATERIAL: CONNECTOR - NYLON UL94-V2 (WHITE)
CONTACTS - 0.30[.012] THICK COPPER ALLOY
(BRIGHT TIN-LEAD 0.00203[.000080] MIN. THICK FOR CONTACTS 640429-2 THRU 2-640429-4).
(MATTE WHISKER MITIGATED TIN 0.00203[.000080] MIN. THICKNESS OVER NICKEL UNDERPLATE FOR 3-640429-2 THRU 5-640429-4).
- 2. CONTACTS ACCEPT 24 AWG WIRE WITH 2.41[.095] MAX INSULATION DIAMETER.
- 3. CONTACTS MUST ACCEPT 1.14±0.03[.045] POST AND REMAIN LOCKED IN POSITION.
- 4 IDENTIFICATION NUMBER FOR LAST CIRCUIT MAY NOT APPEAR ON ALL ASSEMBLIES.
- 5. DIMENSIONS IN BRACKETS ARE IN INCHES.
- 6. HOUSING FEATURES ARE: CLOSED END WITH LOCKING RAMP.
- 7 OBSOLETE PARTS: OBSOLETE CIS STREAMLINING PER D.RENAUD/D.SINISI



THIS DRAWING IS A CONTROLLED DOCUMENT.		DWN S. CARPENTER 08JUL2003		
DIMENSIONS: mm [INCHES]		CHK D. BOSSI 08JUL2003		
TOLERANCES UNLESS OTHERWISE SPECIFIED:		APVD D. BOSSI 08JUL2003	NAME	
0 PLC ± -		PRODUCT SPEC	MTA 156 CONNECTOR ASSEMBLY, 24 AWG, STANDARD	
1 PLC ± -		APPLICATION SPEC	SIZE	CAGE CODE
2 PLC ± -		108-1051	A2	00779
3 PLC ± 0.13 [.005]		114-1020	DRAWING NO	RESTRICTED TO
4 PLC ± -		WEIGHT	C=640429	-
ANGLES ± -		CUSTOMER DRAWING	SCALE	SHEET
FINISH		SCALE 4:1	1 OF 1	REV T3