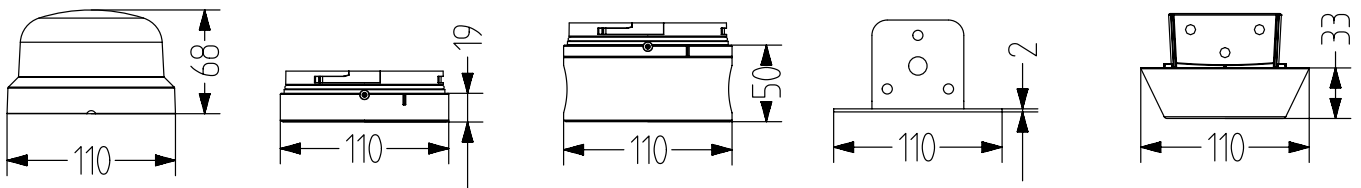


# RCDM Compact LED multifunction beacon

- 110 mm Ø large compact modular LED multifunctional beacon
- milky lens provides nice, homogenous light
- steady/flashing and 4 strobe light modes
- unique, appealing product design
- high protection class IP66 & impact resistance IK08
- base modules for all required mounting types
- can be combined with 32-tone sound generator
- extensive accessories (mounting brackets, seals, cable glands)
- especially suitable for construction work and general applications



## TECHNICAL DATA

Size	110 mm
Housing	Polycarbonate
Lens	Polycarbonate, smooth (milky-white) amber, red, clear, blue, green or yellow
Type of mounting	Any, conduit mounting
Cable entry	Depending on the base, grommet or cable gland (cable entry from below and from the side)
Connection technology	Screw terminal
Leakage current	3mA

Beacon type	Multifunction beacon
Light source	LED (1x12/2+ LEDs, depends on colour)
Duty cycle	100 %
Service life	Light source > 50.000 h
Operating temperature	-30 / +60°C
Degree of protection	IP66, UL Type 4, 4X, 13
Impact resistance	IK08



# RCDM

## ORDER DATA

Type	24-48VAC/DC	110-240VAC	Lens colour	Nominal voltage	Voltage range (V)	Nominal current
RCDM	850561408		amber	24-48VAC/DC	+/-10%	370mA
	850562408		red	24-48VAC/DC	+/-10%	370mA
	850564408		clear	24-48VAC/DC	+/-10%	370mA
	850565408		blue	24-48VAC/DC	+/-10%	370mA
	850566408		green	24-48VAC/DC	+/-10%	370mA
	850567408		yellow	24-48VAC/DC	+/-10%	370mA
		850561313	amber	110/120/230/240VAC	+/-10%	90mA
		850562313	red	110/120/230/240VAC	+/-10%	90mA
		850564313	clear	110/120/230/240VAC	+/-10%	90mA
		850565313	blue	110/120/230/240VAC	+/-10%	90mA
		850566313	green	110/120/230/240VAC	+/-10%	90mA
		850567313	yellow	110/120/230/240VAC	+/-10%	90mA



RBA



RBL



RBH



RBNPT

## BASES

Type	Type of product	24-48 V AC/DC	110-240 V AC
RBA	Audible base for R series beacons	850535408	850535313
RBL	Standard base for horizontal mounting	850500900	
RBH	Universal base for horizontal and pole mounting	850510900	
RBNPT	Universal base for NPT 1/2" conduit mounting	850515900	



RWD



RWU



RWA



RG1



RG2



AKV



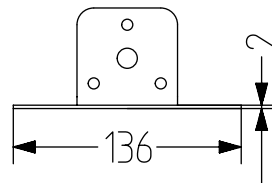
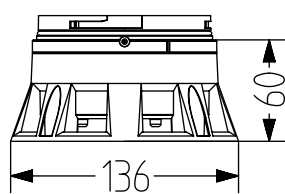
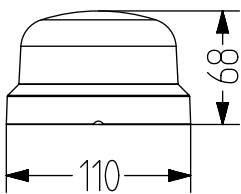
RKV

## ACCESSORIES

Type	Type of accessory	Order number
RWD	Design bracket for wall mounting of R-series beacons	850520900
RWU	Metal bracket for wall mounting of R-series beacons	850521900
RWA	Metal bracket for audible bases	850531900
RG1	Flat gasket for R-series bases for sealing onto smooth housings	850590900
RG2	Flat gasket for mounting the RWD designer bracket on walls	850590910
AKV	Cable gland M20 for N/M/R-series, CT5, multitone sirens A and/or beacons Q	698800026
RKV	Cable gland M16 for R series bases	850590920

# RCDM+RBA Compact LED multifunction beacon with audible base

- 110 mm Ø large compact modular LED multi-functional beacon
- milky lens provides nice, homogenous light
- steady/flashing and 4 strobe light modes
- audible base with 32-tone sounder
- >95 dB sound pressure, 3 tones externally controllable
- unique, appealing product design
- high protection class IP66 & impact resistance IK08
- metal bracket for mounting on walls (accessory)
- milky-white lens for all colours
- especially suitable for construction work and general applications



## TECHNICAL DATA

Size	110 mm
Housing	Polycarbonate
Lens	Polycarbonate, smooth (milky-white), amber, red, clear, blue, green or yellow
Type of mounting	Any, conduit mounting
Cable entry	Cables are inserted from below
Connection technology	Screw terminal
Leakage current	3mA
Beacon type	Multifunction beacon

Light source	LED (1x12/2+ LEDs, depends on colour)
Duty cycle	100 %
Service life	Light source > 50.000 h
Operating temperature	-30 / +60°C
Degree of protection	IP66, UL Type 4,4X, 13
Impact resistance	IK08
Volume	Up to 95 dB
Tone	32 tones, 3 tones can be switched externally



# RCDM+RBA

## ORDER DATA

Type	24-48VAC/DC	110-240VAC	Lens colour	Nominal voltage	Voltage range (V)	Nominal current	
RCDM	850561408		amber	24-48VAC/DC	+/-10%	370 mA	
	850562408		red	24-48VAC/DC	+/-10%	370 mA	
	850564408		clear	24-48VAC/DC	+/-10%	370 mA	
	850565408		blue	24-48VAC/DC	+/-10%	370 mA	
	850566408		green	24-48VAC/DC	+/-10%	370 mA	
	850567408		yellow	24-48VAC/DC	+/-10%	370 mA	
		850561313		amber	110/120/230/240VAC	+/-10%	90 mA
		850562313		red	110/120/230/240VAC	+/-10%	90 mA
		850564313		clear	110/120/230/240VAC	+/-10%	90 mA
		850565313		blue	110/120/230/240VAC	+/-10%	90 mA
		850566313		green	110/120/230/240VAC	+/-10%	90 mA
		850567313		yellow	110/120/230/240VAC	+/-10%	90 mA

Type	Type of product	24-48 V AC/DC	110-240 V AC	Voltage range (V)	Nominal current	Mains frequency
RBA	Audible base for R series beacons	850535408		+/-10%	230mA	50-60 Hz
			850535313	+/-10%	70mA	50-60 Hz



RWA

## ACCESSORIES

Type	Type of accessory	Order number
RWA	Metal bracket for audible bases	850531900